



THE WESTWOOD SCHOOL

A TECHNOLOGY COLLEGE

Sixth Form Courses 2008-2009

CONTENTS PAGE

A message from the Head Teacher	Page 1
The Management Team	Page 2
What OFSTED thought about our Sixth Form	Page 3
Pastoral Support	Page 3
Why choose The Westwood School?	Page 3
Accommodation	Page 4
Sixth Form Study	Page 4
Tutorial and Enrichment Programme	Page 4
Homework and Private Study	Page 4
Careers Guidance	Page 5
Extra Curricular Activities	Page 5
Calendar	Page 5
Student Destinations 2006 - 2007	Page 6 - 7
Subject Timetable Blocks	Page 8
One Year Vocationally Based Courses	Page 9
Vocational Courses Information	Page 10 - 12
AS & A2 Subject Information	Page 13 - 40

A MESSAGE FROM THE HEADTEACHER

Dear Parent / Carers

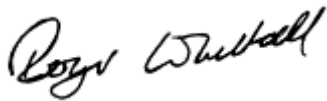
The Westwood School's record of achievement in the Sixth Form is an excellent one and this is a very exciting time to join our Sixth Form. We have increasing numbers of students choosing to continue their education with us and, as you will see, we offer a wide range of subjects.

The benefits of returning to Post-16 Education at The Westwood School are enormous. Students benefit from a carefully devised personal, social and tutorial programme and we have developed a student-centred modular entitlement and enrichment curriculum which includes Key Skills. Our refurbished Library is now allocated entirely as a Post-16 Study Area with 21st century facilities. We provide an excellent student-centred service to all our students and there is careful guidance on Higher Education choices and information on future careers provided by our highly experienced Post-16 team supported by the Connexions service.

We are confident that we can give our Post-16 students the best possible support in their education. We are committed to supporting each student individually through careful action planning and regular Progress Reviews. Having interviewed all of our current Year 11, we are looking forward to having a very strong cohort in the lower sixth.

We look forward to seeing you in September.

Yours sincerely

A handwritten signature in black ink that reads "Roger Whittall". The signature is written in a cursive style with a large initial 'R'.

Roger Whittall
Headteacher

The Sixth Form Management Team:

Ms S Hodge
Miss K Gibson
Mr I Phipps

Director of Sixth Form
Year 13 Tutor
Year 12 Tutor



A Message from the Director of Sixth Form

A decision to join The Westwood School Sixth Form means excellent opportunities to pursue academic and social interests in a supportive environment. These opportunities, taken full advantage of, will give you personal satisfaction and a firm foundation for your future. You can do well academically thanks to high teaching standards and a real sense of community.

What Ofsted said about our Sixth Form

“Facilities for social activities and private study are good. Students say that they receive good support and guidance from tutors and teachers. Students also benefit from partnership with the Coventry Federation of Sixth Forms and are able to choose from a wide range of vocational and academic courses. Students gain confidence, acquire qualifications and progress to higher education or employment.

The recently appointed Director of Post-16 has already made a significant impact.”

Pastoral Support

You will be assigned to a Sixth Form Tutor group. Your tutor will be your first contact should a problem arise. Through regular meetings your progress will be discussed and assessed. Parents will receive copies of Progress Reviews as well as written reports in Years 12 and 13. Your tutor will assist with your Higher Education application by writing your reference and guiding you through UCAS procedures.

Why choose The Westwood School?

We are a small, very friendly school where all our staff are supportive and encouraging, taking time to meet the needs of each individual student.

All students are welcome to continue their education at Westwood Sixth Form providing there is a suitable course available. As a member of the South West Federation we can offer students access to a wide range of subject choices. The South West Federation consists of The Westwood School, Finham Park, Tile Hill Wood, Bishop Ullathorne, Woodlands and City College.

We provide a purpose built study centre on the top floor of the library with IT facilities and partitioned individual study tables. Students have access to their own reference library that includes subject textbooks, periodicals, CD roms and an up to date section containing UCAS course information along with University prospectus.

Our staff are well qualified and experienced in the teaching of Post 16 courses. We work together with Connexions to give students advice on careers and Higher Education courses.

Students have the opportunity to gain further qualifications and experience through the Enrichment Programme. You can participate in Job Insight Programmes and subject residential courses at Dol-y-Moch.

Accommodation:

The Sixth Form Centre is situated at the front of the school and was refurbished during the 2006/7 academic term. The accommodation consists of two teaching rooms, a common room with brand new kitchen facilities, and a games area. Students may relax, socialise, play music and eat in the common room during break and lunch times. The teaching areas, when not in use, are also available as private study areas.

Sixth Form Study Centre:

The purpose built Sixth Form Study Area is upstairs in the Library. Sixth Form Students have ICT access via a networked computer system. Partitioned individual study tables provide the students with quiet study areas. Sixth form students have access to their own reference library facilities, for example; text books, periodicals and other points of reference such as CD-ROMs to encourage the students to read around their subjects.

Tutorial and Enrichment Programme:

Attendance on Tuesday mornings and Wednesday afternoon is compulsory for all students. The PSHCE Programme which is designed to help with your studies, and prepare you to move into employment or Higher Education, covers such topics as study skills, time management, health education, relationships, coping with stress and handling money. You are taken through the on-line UCAS system and encouraged to research carefully before choosing courses.

Important additional qualifications in Critical Thinking, General Studies, Universities Award Sports Leadership, Cisco, Young Enterprise and GCSE re-sits in English and Maths may be gained during this time.

Homework and Private Study:

Students can expect two or three hour's homework every day and firm deadlines will be given for its completion. Some of the sixth form students will be timetabled to have private study time and it is vital that they use this time wisely, trying to avoid last minute panics to complete work. Also private study time is to be spent in school, unless permission has been given to work at home.

Career Guidance:

A comprehensive programme of career guidance with advice to students about their choices of Sixth Form courses begins in Year 11 and all prospective students are interviewed by the Sixth Form Management Team. A wide range of resources from the Connexions Advisor are available in the Sixth Form section of the Careers Library, especially when applying for higher education places or employment.

Extra-Curricular Activities:

The extra-curricular work done by the Sixth Form is much valued. Many younger pupils have benefited from the input made by Year 12 and 13 students through the Community Service Programme. Involvement in Paired Reading and the School Council are good examples of the commitment made by the Sixth Form to the rest of the school.

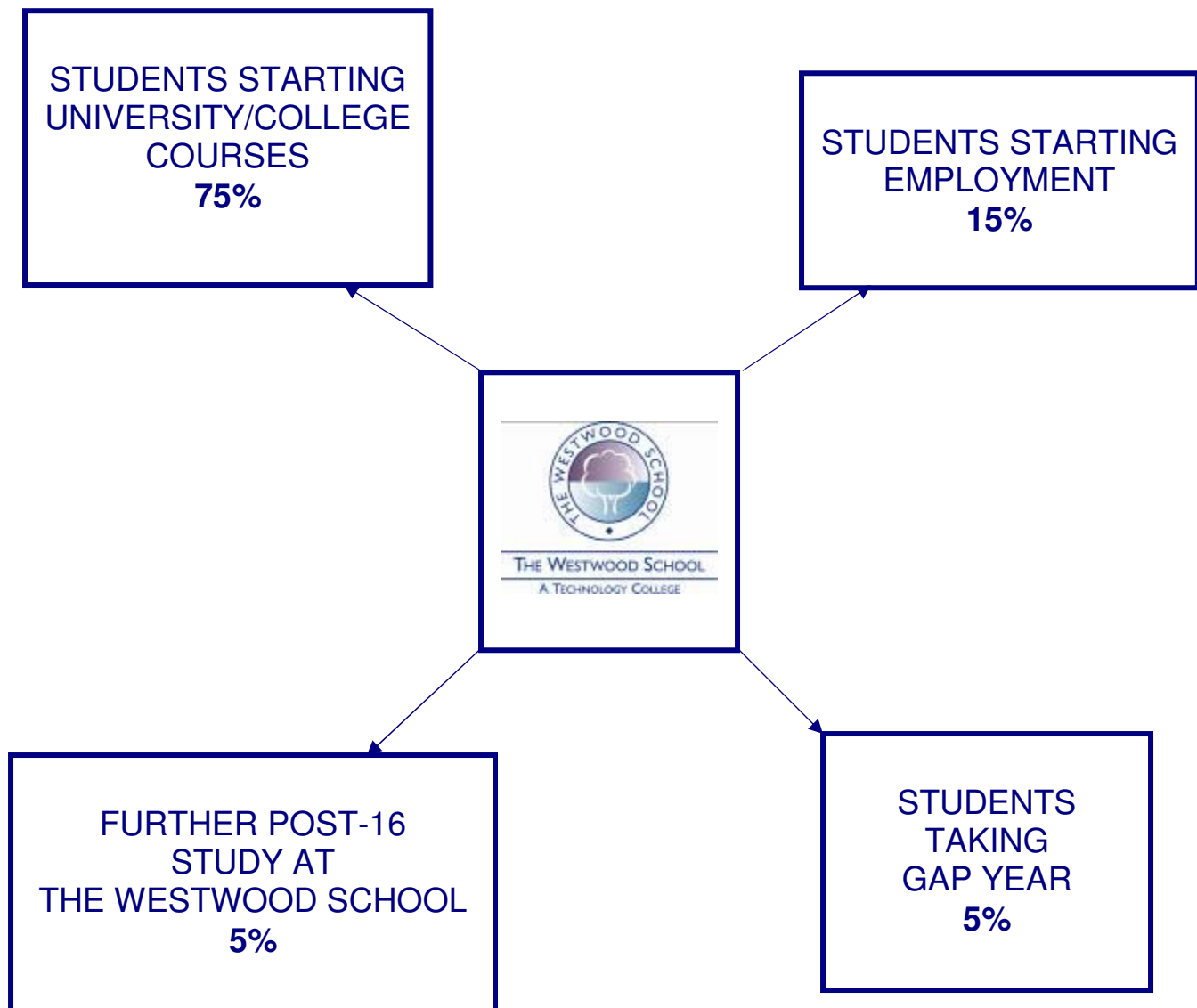
Students take part in Drama and Music events. Charities such as Comic Relief have benefited from Sixth Form fund raising events. Students are encouraged to use the sports facilities; trampolining, hockey and football being popular choices. Every year parties of students have visited European cities such as Paris, Amsterdam and, this year, Barcelona.

Calendar 2008-2009:

Year 12	Year 13
	Sep/Dec - UCAS Applications
Oct/Nov - Progress Checks and Target Setting	Oct/Nov - Progress Checks and Target Setting
Dec - Parents Evening	Dec - Parents Evening
Jan - Modular Exams	Jan - Modular Exams
Feb/Mar - Progress Checks and Target Setting	Feb/Mar - Progress Checks and Target Setting
April - Reports	April - Reports
Jun - Exams	Jun - Exams

STUDENTS AGED 18 DESTINATION ROUTES 2006/2007

100% PASS RATE AT 'A' LEVEL



THE WESTWOOD SCHOOL
HAS A PARTNERSHIP AGREEMENT WITH
COVENTRY UNIVERSITY AND
THE UNIVERSITY OF WARWICK

Year 13 2007 Destinations

Destination	Course
Warwick University	English
Gap Year	Volunteer/Employment
Birmingham University	Computer Science
Newman College (deferred)	Early Childhood Education
De Montfort University	Computer Science
Wolverhampton University	Sports Studies
Wolverhampton University	Sports Coaching
UCE Birmingham	Primary Teaching
Warwick/Coventry University	Accounting and Finance
Employment	
Aberystwyth University	Economics and Accounting
Coventry University	Computing
Southampton University	Law
Coventry University	Marketing
Warwick University	Engineering
Returning home to Portugal and university	

This table shows the destinations for the majority of the year 13 students who finished at The Westwood School in 2007

Year 12 AS Subject Blocks

BLOCK A/S Mon am, Thurs pm	BLOCK C/V Wed am, Fri pm	BLOCK D/T Thurs am, Mon pm	BLOCK E/U Fri am, Tues pm
Biology x2	Art & Design	Art & Design	Art
Business Studies	Biology	Art Fine	Biology
Computing	Business Studies	Business (Applied)	Design
English (Lang & Lit)	Chemistry	Business Studies	Design 3D
English (Lit)	Design	Chemistry	Economics
History	Design (Tex)	Computer Studies	English (Lang & Lit)
ICT (Applied)	Electronics	Dance	English (Lit)
Japanese	English Literature	English (Lang & Lit)	French
Law	Geography	English (Lang)	Geography
Mathematics	History	French	German
Media	ICT	Geography	Health & Social Care
Music	ICT (Applied)	Health & Social Care	History
Music Technology	Mathematics	Mathematics	ICT (Applied)
Photography	Media Studies	Media Studies	IT
Physics	Physics	PE	Mathematics
Psychology	Psychology	Psychology	Media
	RE	Theatre Studies	PE
	Sociology		Philosophy & Ethics
	Spanish		Physics
			Politics
			Psychology
			Use of Maths

This is an example of Year 12 subject blocks within the federation.

One Year Vocationally Based Courses

BTEC FIRST DIPLOMAS

What is a BTEC First Diploma?

A BTEC First Diploma is a practical, work-related course. You learn by completing projects and assignments that are based on realistic workplace situations, activities and demands.

It introduces you to the employment area you have chosen and provides a good basis to go on to a more advanced work-related qualification.

A BTEC First Diploma is equivalent to four GCSEs grade A*-C and is normally taken as a full-time course.

The South West Federation, of which The Westwood School is a part, will be offering a wide number of BTEC Firsts for 2006-7. You will still belong to your school but might have to travel for part of your course depending on the choices you make. You will be based at your school and will be tutored and mentored there.

BTEC Firsts available: (You will only be able to choose ONE)

- Engineering
- Information Technology
- Sport

For Further Information

Please contact:

Mrs L. Burilin,

South West Federation,

14 - 19 Co-ordinator,

based at City College.

BTEC First Diploma in Manufacturing Engineering

What are the entry requirements?

You will normally need to have at least one of the following:

- appropriate GCSEs (normally at least four passes at Grade G or above, to include Science, Mathematics and subject testing the use of English)
- appropriate knowledge and/or experience gained in employment.
- Engineering Manufacturing NVQs at level 2 or experience appropriate for this level of study.

What is the course structure?

The course is made up of six units - three core units that everyone takes and three specialist units. The specialist units enable you to study particular areas in more depth.

What subjects will I study?

All students take the three core units:

Applied Science & Mathematics for Technicians
Working Practices *
Engineering Processes & Techniques

You take three specialist units from this list:

Manufacturing Technology	Electronic Fundamentals
Welding & Fabrication Principles & Technology	Robot Technology & Programmable Controllers
Engineering Drawing & Marking out	Electronic Circuit Construction & Testing
CAD Fundamentals	Engineering Materials
CNC Fundamentals	
Quality Control & Measurement	

* This unit contributes towards the externally assessed Integrated Vocational Assignment.

How is the course assessed?

All units are assessed and graded, and an overall grade for the qualification is awarded.

What can I do at the end of the course?

A BTEC First Diploma can develop the skills you need to start or progress in careers such as:

- Fabrication
- Machining
- Technical Services

The qualification provides the underpinning knowledge requirements for Performing Engineering Operations and Engineering Production NVQs at Level 2. It also provides a good grounding to go on to a more advanced course such as the National Diploma or National Certificate in:

- Manufacturing Engineering
- Operations & Maintenance Engineering

BTEC First Diploma for IT Practitioners (General)

What are the entry requirements?

- You will normally need to have at least one of the following:
- A Standard of literacy and numeracy supported by a general education equivalent to 4 GCSEs at grades D-G
- Related work experience
- Other related level 1 or 2 qualifications

What is the course structure?

The course is made up of six units - two core units that everyone takes and four specialist units. The specialist units enable you to study particular areas in more depth.

What subjects will I study?

All students take the two core units:

Using ICT to present information
Introduction to computer systems

Plus four specialist units from the following list:

Website development
Database software
Spreadsheet software
IT essentials (CISCO)

How is the course assessed?

All units are assessed and graded, and an overall grade for the qualification is awarded.

What can I do at the end of the course?

With further training or study, students go into careers such as:-

- End user support technician
- Trainee IT support officer or technician

A BTEC First Diploma prepares you for employment and provides a good grounding to go on to a more advanced course such as:

- BTEC National for IT Practitioners
- Advanced VCE in ICT

BTEC First Diploma in Sport (exercise and fitness)

What are the entry requirements?

You will normally need to have at least one of the following:

- A Standard of literacy and numeracy supported by a general education equivalent to 4 GCSEs at grades D-G
- Related work experience
- Other related level 1 or 2 qualifications

What is the course structure?

The course is made up of six units - two core units that everyone takes and four specialist units.

What subjects will I study?

All students take the two core units:

Health, Safety and Injury
The body in sport

You take four specialist units from the following pathways:

The Sports Industry
Sports Leadership Skills
Work Based Project
Practical Sports
Preparation for sport
Outdoor and Adventurous Activities
Instructing exercise and fitness
Sport and Leisure Facility Operations

How is the course assessed?

All units are assessed and graded, and an overall grade for the qualification is awarded.

What can I do at the end of the course?

With further training or study, students go into careers such as:-

- Sports Centres
- Leisure Centres
- Outdoor Activities Centres

A BTEC First Diploma prepares you for employment and provides a good grounding to go on to a more advanced course such as:

- BTEC National Diploma/Certificate/Award in Sport
- Advanced VCE in Leisure and Recreation.

AS / A2 Applied Business

Course Aims

The Applied Business course is designed to provide students with a more practical and investigative approach to the study of business. 67% of marks are awarded for coursework portfolios, and 33% for examinations.

Entry Requirements

You should have five Grade C's or above at GCSE. GCSE Business Studies / Applied Business would be desirable but not essential. You should be well organised, be able to work independently, and have sound ICT and mathematical skills. The ability to meet deadlines is also essential.

Course Content (OCR)

As Applied Business Single Award /Year 12

Students will study the following units:

- | | |
|---|--------------------------|
| - Unit 1 - Creating a Marketing Proposal | Portfolio & Presentation |
| - Unit 2 - Recruitment in the Workplace | Portfolio |
| - Unit 3 - Understanding the Business Environment | Examination |

This course is ideal for year 12 students with other specialisms who want to add variety to their studies, and for students who want to develop a range of skills that are essential in the modern workplace.

A Level Applied Business Single Award / Year 13

Students will study the units above, plus:

- | | |
|--|-------------|
| - Unit 9 - Strategic Decision Making | Examination |
| - Unit 10 - A decision plan for the entrepreneur | Portfolio |
| + 1 other optional unit from a choice of 6 | Portfolio |

A Level Applied Business Double Award / Year 12 & 13

Students will study all the above units, plus an additional 3 units per year. In total students must sit 4 examinations, and submit 8 coursework portfolios.

This course is for people who are fairly sure that they wish to specialise in the field of business as a career. Further information on this course is available on request.

Skills Development

As with all applied courses, the Applied Business course takes emphasis away from the theoretical aspects of business education, and instead students spend more time developing skills that are required to succeed in modern day business. Examples include presentation skills, interpersonal skills and team working, initiative and independence, and thinking and creativity skills. The creation of business documents is also an essential part of the course.

A more theoretical approach is available through AS / A2 Business Studies offered by one of the Federation partner schools.

Advanced GCE in Applied ICT (Single Award)

Entry Requirements

Students should have a minimum of a GCSE Grade C in English and Mathematics. There is no requirement for students to have a GCSE in ICT, although a broad and genuine interest in ICT is essential.

Course Content (OCR)

The course contains both theoretical and practical ICT aspects and looks at how ICT and ICT tools are used in the home, in the work place and in society in general. While AS Computing involves an in depth study of programming, programming languages and how computers function, the Applied GCE is more suited to students with a more general interest in ICT. The course features a strong practical element, with students producing coursework assignments as well as some externally examined units.

The course would suit students who enjoy project work and prefer a more independent approach to learning.

The AS course constitutes three compulsory units:

- Using ICT to communicate portfolio
- How organisations use ICT
- ICT solutions for individuals and society

Students wishing to progress to A2 must choose a further three units from a selection including:

- Publishing
- Artwork and Imaging
- Developing and creating Websites

Assessment (OCR)

- Assignment work on all Units (except Unit 2)
- Unit Tests (Unit 2 and in some optional units chosen)

OCR Nationals Level 3 Media

Entry Requirement

These new course specifications are being offered at Level 3 to Advanced Level students. The National Certificate is designed to be equivalent to other Level 3 specifications such as GCE A2 (National Diploma A2 x2; and National Extended Diploma A2 x3).

The OCR Level 3 Nationals have been designed to provide candidates with high quality industry recognised qualifications geared to the specific requirements of key sectors. They have been developed to recognise candidates' skills, knowledge and understanding of media operations, technologies and environments. They accredit candidates' abilities to carry out a range of tasks and have been designed to recognise candidates' achievements in a modern, practical way that is relevant to the workplace.

Course Content

The course comprises four Mandatory Units plus Optional Units as follows:

- National Certificate - 4 Mandatory Units + 2 Options
- National Diploma - 4 Mandatory Units + 8 Optional Units
- National Extended Diploma - 4 Mandatory Units + 14 Optional Units

For candidates who attempt single units, unit certification is available individually.

Mandatory

1. Introduction to media and textual analysis
2. Pre-production and planning
3. Production
4. Marketing media and audience feedback

Optional

Non-specialist

- U5: Ideas generation for media products
- U6: Production management in media organisations
- U7: Presentations and exhibitions
- U9: Interview and presentation techniques
- U10: Career planning in the media industry
- U11: Developing skills through work experience in the media industry

Writing and Publishing

- U12: Factual writing for print products
- U13: Fictional writing for print products
- U14: Publishing
- U15: Photography and digital imaging
- U16: Design and Layout

TV and Film

- U17: Video production and editing
- U18: Audio for the moving image
- U19: UK Film studies
- U20: Television production
- U21: Writing for the screen
- U22: Film and television production and editing
- U23: Cartooning and animation

Audio

- U26: Talk radio production
- U27: Music radio production
- U28: Writing for radio

Assessment

Assessment is 100% coursework, internally assessed and externally moderated.

AS/A2 Art (Fine)

Entry Requirement

At least Grade C in Art or Art Graphics but candidates are also considered on their individual merits.

Course Content

Candidates will be introduced to a variety of experiences exploring a range of fine art media, techniques and processes. They will be made aware of both traditional and new technologies.

Materials

All students will need sketch books and art materials for use at home.

Areas of Study

Candidates are required to work in one or more area(s) of Fine Art, such as those listed below. They may explore overlapping areas and combinations of areas.

- painting and drawing
- mixed media, including collage and assemblage
- sculpture
- land art
- installation
- printmaking: relief, intaglio, screen processes and lithography
- film, television, animation, video, photography: lens-based and/or light based media and new media.

Assessment (AQA)

This will be done through a variety of exams and coursework.

AS/A2 Art (Graphic Design)

Entry Requirement

At least Grade C in Art, Art Graphics or Photography GCSE but candidates are also considered on their individual merits.

Course Content

Graphic Design is the communication of information and ideas by visual means. The critical elements for a graphic designer are the successful communication of a message through the organisation of words and images. In order to achieve this, the purpose of this course is to develop your ability to appreciate the visual world, enhance practical, critical and analytical skills and in so doing respond in a personal and creative way. Students are able to work in one or more of the following disciplines: advertising, illustration, packaging and typography, where the opportunity to study and scrutinize the work of artists and designers from differing cultures will underpin all project work.

Materials

Opportunities are available to work in paint, digital art, photography, collage, batik and printmaking. Students wishing to use specialist materials such as acrylic paint and canvas will need to purchase these at an approximate cost of £35 per annum. All students will need sketch books and art materials for use at home.

Assessment (EDEXCEL)

AS LEVEL: Unit 1 - Coursework
Unit 3 - 8 hour exam
Unit 1 - coursework 60%
Unit 2 - exam 40%

A2 LEVEL: Unit 4 - Critical Studies
Unit 5 - 12hr exam
Unit 4 - coursework 60%
Unit 5 - exam 40%

AS/A2 Art (Photography)

Entry Requirement

At least Grade C in Art GCSE.

Course Content

The main purpose of this course is to develop your ability to understand and represent the visual world in photographic form.

You will be given the opportunity to learn and use a range of photographic processes and materials including black and white film and prints and respond to given themes in an artistic creative response, considering the ideas and practices of a range of artists and photographers.

Materials

The school has a fully equipped 14 station darkroom, SLR, automatic and digital cameras. Students will need to purchase a photography pack for use at home at an approximate cost of £35 per annum. Students wishing to use specialist materials will need to make separate additional purchases.

Assessment (EDEXCEL)

AS LEVEL: Unit 1 - Coursework
Unit 3 - 8 hour exam
Unit 1 - coursework 60%
Unit 2 - exam 40%

A2 LEVEL: Unit 4 - Critical Studies
Unit 5 - 12hr exam
Unit 4 - coursework 60%
Unit 5 - exam 40%

AS/A2 Biology

Entry Requirement

Students should have gained at least Grade C in Double Award Science Higher Paper or Grade C in Biology.

Course Content

The three modules to be completed for the AS course in Year 12 are:

Module 1 - Core Principles:	Biological Molecules Cells Cell Transport Exchange Mechanisms Enzymes
-----------------------------	---

Module 2 - Genes and Genetic Engineering:	The Genetic Code Cell Division Sexual Reproduction Gene Technology
---	---

Module 3a - Module 3b -	Physiology and Transport Practical Investigations
----------------------------	--

The three modules to be completed for the A2 course in Year 13 are:

Module 4 - Energy, Control & Continuity:	Respiration & Photosynthesis Homeostasis Co-ordination and Inheritance
--	--

Module 5a - Module 5b -	Environment Practical Investigation
----------------------------	--

Module 6 (Optional Module) -	Microbes and Biotechnology
------------------------------	----------------------------

Assessment (AQA Syllabus B)

The practical investigation to be completed for AS will be based on topics from Modules 1-3 while that for A2 will be based on a topic from Modules 1-6. It is anticipated that Modules 1-3 for AS will be assessed in June of Year 12, while Modules 4-6 will be assessed in June of Year 13.

AS/A2 Business Studies

Entry Requirement

You need 5 GCSEs Grade A-C and Information Technology skills are helpful. We are prepared to discuss individual cases outside this framework.

Course Content

By the end of this course you will have a general understanding of the problems faced by business and have started to see how such problems could be tackled.

AS Level: In Year 12 you study three modules covering Marketing, Finance, Human Resources, Operations Management and external influences on firms. These modules will account for 50% of the A Level marks.

A2 Level: In Year 13 you will study Marketing, Finance, Human Resources and Operations Management in more detail and you will study Business Objectives and Strategy. You will also produce a piece of coursework.

Assessment (AQ Modular)

The course is modular with examinations in January and June of both years. You can retake most of the modules. One module, worth 15% of the total marks for A level, will be assessed by coursework.

AS/A2 Chemistry

Entry Requirement

Students should have gained at least a GCSE Grade C in Double Award Science or Grade C in Chemistry, as well as Mathematics Grade C in GCSE.

Course Content

AS LEVEL:

Module 1 (30% of AS; 15% of A2):	Foundation Chemistry
Module 2 (30% of AS; 15% of A2):	Chains & Rings
Module 3 (40% of AS; 20% of A2):	How Far/How Fast (20% AS / 10% A2) Coursework 1 (20% AS / 10% A2)

A2 LEVEL:

Module 1 (15% of A2):	Chains, Rings and Spectroscopy
Module 5 (15% of A2):	Trends and Patterns (7.5% A2) Biochemistry or Transition Metals (7.5% A2)
Module 6 (20% of A2):	Unifying concepts in Chemistry (10% A2) Coursework 2 (10% A2)

Assessment (OCR)

Examinations in January and June of Years 12 and 13.
Ongoing Assessment of practical skills in Years 12 and Year 13.

AS/A2 Computing

Entry Requirement

English GCSE (or other essay- based subjects) Grade C or above.
Mathematics GCSE in Grade C or above.

Course Content

AS LEVEL:

Module 1 (35% of AS, 17.5% of A2): Computing Systems Programming and network concepts:

Computer Systems
Programming
Information and Data Representation
Communications and Networking.

Module 2 (35% of AS, 17.5% of A2): Principles of Hardware, Software and Applications:
Applications and Effects
Files and Databases
Operating Systems.

Module 3 (30% of AS, 15% of A2): Practical Systems Development:
The Classical Systems Life-Cycle
Analysis, Design, Testing Strategies,
Construction/Implementation
Maintenance, Evaluation.

A2 LEVEL:

Module 4 (15% of A2): Processing and Programming Techniques
Machine Level Operation and Assembly Language
Programming Concepts
Data Representation in Computers
Operating Systems

Module 5 (15% of A2): Advanced Systems Development
Applications and Effects
Files and Databases
Systems Development
Hardware Devices, Networking.

Module 6 The Practical Project
(Centre assessed project 20%)
Systems Development.

Assessment (AQA)

* 4 examinations.

* 2 projects, one in each year.

AS Critical Thinking

Entry Requirement

You will need to have attained a high grade in GCSE English. Critical Thinking is useful for candidates taking a wide variety of AS or A2 subjects. Students considering taking Law, Philosophy, Medical or Theology at a higher level would find it a useful introduction to some of the principles of Logic and Ethics.

Keeping up to date with current affairs should be considered an essential part of the course: you should aim to read a quality (broadsheet) newspaper every day, paying particular attention to the Comment/Editorial and main feature sections. You should also aim to listen (critically!) on a regular basis to Radio 4 and TV news and discussion programmes such as Today or Newsnight. Students should be prepared to question their beliefs and ideas of the society we live in.

Course Content

Critical Thinking aims to give candidates the opportunity to develop the skills, which are central to the process of arriving at reason-based judgement. It is not a content-based course, but rather one which aims to develop skills of reading, thinking logically, evaluating arguments and expressing ideas and opinions clearly and concisely. There is not lots of information to learn, rather, skills that can be practised in all subjects.

You will be expected to read about and discuss a wide variety of topics and to develop your skills of analysing arguments. You will have practice in writing responses to the topics discussed, but there will also be plenty of opportunity for class debate. Topics to be covered this year will include:

The Iraq War, the value of celebrity, the use of evidence in a trial, footballing tactics, fairy tale monsters and the continuing debates over climate change.

Topics selected are used to cover the following areas: identifying the elements of reasoning; evaluating reasoning of different kinds; recognising and evaluating assumptions; clarifying expressions and ideas; presenting arguments.

Assessment (OCR)

2 examination papers taken in the Summer term.

Unit 1 - 1hour 15 minutes (40% of AS grade)

Unit 2 - 1hour 45 minutes (60% of AS grade)

AS/A2 Dance

Entry Requirement

All candidates will be considered on individual merits but a range of 5 GCSE Grades A-C is essential.

Course Content

The course is divided up into six units. Three are taken in the first year (AS Level) and three are taken in the second year (A2 Level).

AS Level Units

Unit One (40% of the final AS grade)

This unit involves the study of choreography and performance, the lessons will be practical and suitable clothing will be required. This unit culminates in a practical examination where students will be expected to perform a short solo to an external examiner.

Unit Two (30% of final AS grade)

For unit 2 students will learn how to analyse their own dance work and the work of others, their understanding of anatomy and physiology will be developed and they will be taught how to formally write dance down. This unit will be examined through the production of an essay.

Unit Three (30% of final AS grade)

A dance work will be studied in this unit. Just like a book or a play might be studied in English. The pupils' knowledge and understanding of this studied dance piece will be tested through a written examination. Questions on other elements studied in Units 1 and 2 will also be referred to in this examination.

After the AS course a student can decide if they wish to continue this qualification to A2 Level.

A2 Level Units (in brief)

Unit Four (30% of final A2 grade)

A practical unit of work culminating with each student choreographing a short group piece.

Unit Five (30% of final A2 grade)

There are two elements to this unit. A technical set dance piece will be taught to all A2 students which will have to be performed to the external examiner. Secondly on the day of the examination students will be given a page of notation (written dance) to read and then perform for the external examiner.

Unit Six (40% of final A2 grade)

A second dance work will be studied and the pupils' knowledge and understanding of this will be examined through a final written examination. Other elements of all the other units may also be referred to in this exam.

AS/A2 Design & Technology

Entry Requirement

A range of GCSE Grades A-C is essential but the most important requirement is that students should have an enthusiasm for creativity.

Course Content

A three-dimensional Design based course, which is designed to encourage candidates to take a broad view of technology and design to develop their capacity to design and make products and to appreciate the complex relationships between design, materials, manufacture and marketing. Knowledge and skills are developed through practical experience of design-and-make exercises, which introduce a variety of materials and provide the opportunity to consider how style, fashions and technology have played their part in the evolution of everyday products and artefacts.

Assessment (AQA)

AS LEVEL:

Unit 1 - Written paper 'Materials' 1hr 30

Unit 2 - Coursework 40hrs

Unit 3 - Written paper 'Design' 2hrs

A2 LEVEL:

Unit 4 – Product Study 20 hrs

Unit 5 – Coursework 50 hrs

AS/A2 Drama / Performing Arts

Entry Requirement

You should have 5 GCSEs at Grade C or above, one of which should be English.

Course Content & Assessment (Edexcel)

Unit 1 (20%) - Performance of a devised piece of drama based on an agreed theme with your teachers and showing what you have learnt in the course so far. Acting or technical/design can be assessed. Internally assessed

Unit 2 (15%) - Examination on the two texts you will study over the year.

Questions will be from the point of view of the director, designer or performer.

Externally assessed.

Unit 3 (15%) - Examination. Section A requires you to analyse a live piece of theatre you have seen over the course. Section B requires you to study a theatre practitioner and answer questions on his work/influence on theatre. Externally assessed.

Unit 1 (15%) - You will study 2 texts in lessons and complete practical and written coursework tasks demonstrating your understanding. A portfolio of notes/bullet points make up the written elements of this unit. Internally assessed.

Unit 2 (20%) - Performance of a selection of scripts. Acting or technical/design can be assessed. Externally assessed.

Unit 3 (15%) - Examination. Section A asks you to analyse how you created your performance in Unit 2, evaluating its success and analysing the decision making process. Section B requires you to analyse a live piece of theatre you have seen over the course.

AS/A2 Economics

Entry Requirement

You should have 5 GCSEs at Grade C or above, one of which should be Mathematics.

Course Content

Economics is the study of the ways in which society organises itself to make the best use of scarce resources. This means that economists try to find answers to these questions:

- * What should we produce?
- * How should we produce things?
- * Who should benefit from the things we produce?

During the course you will study the UK economy in detail, look particularly at the Leisure and Tourism Industry and Britain's place in the European Union, as well as studying the problems of the world's developing nations. Much of the time will be devoted to building up 'models' of how economies work and then applying them to real world problems. These models are often expressed in terms of graphs or diagrams. Do not take economics if you are unwilling to ask questions and prefer to be told how to think.

Assessment (OCR)

You are examined throughout the two years of the course as you develop your abilities and skills. Modules can be retaken. By having exams throughout the course you will be able to achieve the result you deserve.

AS/A2 Electronics

Entry Requirement

You need a Grade C or above in Science (Double Award).

Course Content

AS LEVEL:

Module 1: Foundation Electronics

Logic gates
Boolean Algebra
Current, Voltage
Power, Resistance
Diodes, Resistive Transducers,
Transistors
Operational Amplifiers
Capacitors, RC Networks 555 Timer.

Module 2: Further Electronics

Combinational Logic
Sequential Logic Counters
Operational Amplifier Applications
Filter Circuits, Power Amplifiers.

A2 LEVEL:

Module 3: Electronic Control Systems

General Principles
Microprocessor Control Systems
Programming, Neural Networks
Interfacing, Schmitt Trigger Circuits
Additional Input and Output Devices.

Module 4: Communication Systems

General Principles Radio Receivers
Mobile Communication
Digital Communication
Optoelectronics.

Assessment

Two written papers each 1.5hr
Coursework project

70% AS, 35% A2 Level marks
30% AS, 15% A2 Level marks.

AS/A2 English Literature

Entry Requirements

You should have a range of GCSEs A-C with at least a C in English Language. You should enjoy reading and talking about a variety of different books. You should actively seek to find meaning in things that you read and should also look for connections in the different fictions you encounter. Studying this course will give you the chance to see literature in its social, historical and political context. There will, of course, be opportunities to see live theatre and scope for a creative as well as a critical response.

Course Content and Assessment (AQA)

The course should develop students' interest and enjoyment in literary study through reading widely, independently and critically. Students will also be encouraged to reflect on their own responses to texts as well as considering other readers' interpretations and the contexts in which texts are written.

AS LEVEL:

- Unit 1 - Written Paper (1 hr 30 min)
17.5% of total A Level marks
- Unit 2 - Written Paper (2 hours)
17.5% of the total A Level marks
- Unit 3 - Coursework
15% of the total A Level marks.

A2 LEVEL:

- Unit 4 - Coursework
15% of the total A Level marks (comparing texts)
- Unit 5 - Written paper (2 hours)
15% of total A Level marks
Set texts: Drama before 1770; Poetry before 1900.
- Unit 6 - Written paper (3 hours)
20% of total A Level marks (Exploring Texts).

COURSEWORK:

- Unit 3 - AS 30%
- Unit 4 - A2 15% A Level

AS/A2 English Language

Entry Requirement

You should have a range of GCSEs A-C at GCSE with A to C in English. If you enjoy a new challenge, discussing and writing your own pieces, English Language is for you.

Course Content

This is about studying language and there are no set texts. Instead it involves linguistics, which means looking at language in ways that are probably quite new to you. The work includes studying spoken as well as written English and there are plenty of sociological elements.

AS Level

Module 1 - Introduction to the study of language (Linguistics).

Module 2 - Language and social contexts Sociolinguistics: Language and (Technology, Language and Occupations).

Module 3 - Original Writing (Two pieces of different purposes and audiences, plus commentaries).

A2 Level

Module 4 - Investigating Languages (coursework study).

Module 5 - Editorial writing.

Module 6 - Language Development (Children's language, acquisition and Historical changes).

Assessment (AQA)

AS Level

Unit 1 - 1.5hr written exam

- 35% AS
- 17.5% A level

Unit 2 - 1.5hr written exam

- 35% AS
- 17.5% A level

Unit 3 - Coursework

- 30% AS
- 15% A level

A2 Level

Unit 4 - Coursework

- 15% A level

Unit 5 - 2.5hr written exam

- 15% A level

Unit 6 - 2hr written exam

- 20% A level

AS/A2 French

Entry Requirements

You need Grade A*, A or B in French GCSE.

Course Content

This course extends naturally from the communication skills developed at GCSE. Equal importance is given to reading, writing, listening and speaking. An individual speaking exam and written coursework are two features of the course. In addition, you will learn more about the culture and society of the country. Knowledge of grammar is very important. Students should have taken Higher Tier papers at GCSE level.

AS topics for study include the family, leisure, healthy living, education and jobs. There is an anthology of texts on the mass media, environment, immigration, France in Europe and the French speaking world.

You will have the opportunity to use specialist facilities at Tile Hill Wood School with individual Internet access and first-class software, to talk with the French assistant on a regular basis and to undertake a study/work experience visit abroad. Additional activities include trips to the cinema, food tasting and the annual 'A' level conference at Tile Hill Wood School for all sixth form linguists in the LEA.

AS/A2 Further Mathematics

Entry Requirements

Grades required are A* or A at GCSE Mathematics.

Course Content

AS LEVEL:

All students take Further Pure 1 and two applied units, one of which is Decision Mathematics 1, the other applied module is likely to be Mechanics 2.

A2 LEVEL:

All students take a further three modules likely to be Further Pure 2, Further Pure 3 and Statistics 2.

Assessment (EDEXCEL)

Some assessment units will be available in January, others in June.

AS General Studies

Entry Requirement

You will need to have attained a high grade in GCSE English along with a range of other subjects at grade C or above.

Course Content

The three modules to be completed for the AS course in Year 12 are:

Module 1 – Conflict:

Animal and Human Aggression
Tensions in the Modern Family
Mass & Minority
Business Competition

Controversy in Science & Technology
Social Class Divisions
Tastes Stage and Screen
Employment and Unemployment

Module 2 – Power:

Energy Debate
Education As Empowerment
Influence of The Media
Marketing & Advertising
Distribution of Power in Society

Physical Fitness
Voting and the Political Process
Art and Society
The Powers Of Major Companies
Faith and Faiths

Module 3 – Space:

Atmosphere & Climate Change
Housing & Transport Planning
Architecture & Sculpture
Agribusiness and The Land
Land Ownership and Access

Personal Space
Migration Within and Across Borders
Global Broadcasting
Location Of Industry
Environmentalism

Assessment AQA

AS Level
Module 1
Module 2
Module 3

AS/A2 Geography

Entry Requirement

5 GCSE's at Grades A-C, preferably including Geography, but not essential. For success at AS / A2 level geography you need to have a real interest in the world in which we live and a desire to examine changes. You should have a lively and enquiring mind. Moreover, a willingness to explore new ideas is essential.

Course Content

There will be several opportunities for fieldwork, including a residential visit to the North East Coast.

AS LEVEL:

Module 1: Changing Landforms
Module 2: Human Environments
Module 3: Investigation

Changing Rivers and Coasts
Rural and Urban Settlements
Completed using Coursework

A2 LEVEL:

Module 4: Global Challenge

Climate, Ecosystems, Environment and Economic Change.

Module 5: Global Futures

Individual Research on a topic of interest to you.

Module 6: Decision Making

An exam based on all of the work that has a resource booklet to work on before the exam.

Assessment (EDEXCEL B)

AS LEVEL:

Module 1, 2: Two 1hr 30 min examinations

Module 3: A Report based on fieldwork

A2 LEVEL:

Module 4: 2 hour examination

Module 5: Research Essay

Module 6: Decision making exercise.

AS/A2 History

Entry Requirement

Students are expected to have achieved at least a grade C in History at GCSE. However students will be considered for the course if they have achieved a grade C in a comparable subject i.e. Geography or English. Although this would be subject to an interview with the History department.

Course Content

AS

Unit One - Change and consolidation

Totalitarian ideology in theory and practice, c1848-c1941

The USSR and Marxism

- Marxist theory and how it was adapted by Lenin and Stalin
- The power struggle to replace Lenin
- The intolerance of diversity in the 1930s
- Marxist theories of leadership and the cult of Stalin

Nazi Germany

- Nazi ideology looking at Nationalism, race and anti Semitism
- The rise to power of Hitler
- The establishment of dictator
- The intolerance of diversity
- The Fuhrer myth

Unit two - Historical issues and periods of change

Britain 1902-1918: The impact of new liberalism

- The conservative collapse
- Political and social reforms i.e. the welfare of children
- The Irish question
- The struggle for the right for women to vote
- Britain and the outbreak of world war one

A2

Unit Three - The state and the people: change and continuity

Aspects of international relations 1945-2004

- The emergence of superpowers
- US relations with Europe
- The bomb and nuclear arms race
- The cold war
- Post cold war relations

Unit four - Historical enquiry

Students will complete a Historical enquiry investigating an historical issue of their choice. To be agreed by the teacher and the student.

Note: - This is a provisional summary of History AS/A2 at The Westwood School and is subject to change due to the new AS/A2 syllabus

Assessment (AQA)

AS/A2 Mathematics

Entry Requirements

A*, A or B at GCSE Mathematics Higher Level. Intermediate students should discuss their suitability with their Mathematics teacher.

Course Content

AS LEVEL:

C1:- Algebra and Functions Quadratic Functions Inequalities Curve Sketchings Co-ordinate Geometry Sequences and Series Differentiation and Integration	C3:- Algebraic Fractions Functions Exponential and Log Functions Numerical Methods Transforming Graphs Trigonometric Identities Differentiation
C2:- Algebra and Functions Exponential and Logarithms Co-ordinate Geometry Binomial Expansion Geometric Sequences and Series Differentiation and Integration	C4:- Partial Fractions Co-ordinate Geometry Binomial Expansion Differentiation and Integration Vectors
S1:- Mathematical Modelling in Probability and Statistics Representation of Data Location and Dispersion Probability Correlation Regression Discrete random The Normal Distribution	M1:- Mathematic Models in Mechanics Vectors Kinematics Statistics Dynamics Moments Variables

Assessment (EDEXCEL)

Each module is assessed by an examination of 1 hr 30 min. Some assessment units will be available in January, others in June.

AS/A2 Music

Entry Requirement

It is ideal but not necessary to have GCSE Music Grade A* - C. The course requires a high level of musical ability including performance, composition, musical understanding and ability to develop skills, knowledge and understanding.

Course Content

AS LEVEL

Unit 1 - Understanding Music: Area of Study 1: The Western Tonal Tradition, 1700-1850
Area of Study 2: Change and development of a style or genre.

Unit 2 - Composing: Candidates will submit 2 compositions
Unit 3 - Performance: Candidates will perform a programme of ensemble music (5-10 min) and realise 1 composition from Unit 2.

A2 LEVEL

Unit 4 - Understanding Music: Area of Study 3: Music of the 20th and 21st Centuries.
Unit 5 - Investigation, Report & Composition: 1500-2000 word project and related composition
Unit 6 - Performance: Programme of solo music (7-10 min) and viva voce session.

Assessment (AQA)

Unit 1 - 2hr 30mins listening and written paper.
Unit 2 - Teacher monitoring and external.
Unit 3 - Centre assessed (tape for moderation).
Unit 4 - 2hr 30 min listening and written paper.
Unit 5 - Teacher mentoring and external.
Unit 6 - Visiting examiner (15 min).

AS/A2 Physical Education / Sport

Entry Requirement

GCSE PE is an advantage but not essential. You do need a good background of 5 GCSEs A to C, the ability to write well and to work hard. You also need to be quite good practically in at least two activities.

Course Content

AS LEVEL

Unit 1 - Anatomy and Physiology + Acquisition of skills

Unit 2 - Contemporary issues in PE

Unit 3 - A. Practical 1, B. Practical 2.

A2 LEVEL

Unit 4 - A. Historical Studies in PE and Sport.
B. Psychology of Sport.

Unit 5 - Exercise Physiology and Synoptic Exam.

Unit 6 - A. Practical 1
B. Practical B.

Practical Work:

Students choose 2 practical activities worth 30% of the overall marks from a wide range of sports.

Assessment (OCR)

Units 1 + 2: 90 min and 75 min test papers (end of Year 12)

Unit 3: Assessed internally (end of Year 12)

Units 4 + 5: 90 min and 75 min test papers (end of Year 13)

Unit 6: Assessed internally (end of Year 13)

AS/A2 Physics

Entry Requirement

You must have Grade C in Science Double Award GCSE or Grade C in Physics GCSE, as well as Mathematics GCSE to Grade C.

Course Content

AS LEVEL:

Unit 1 - Mechanics and Radioactivity: Forces, Moments, Newton's Laws
Dynamics
Momentum
Radioactive decay and the nuclear atom.

Unit 2 - Electricity and Thermal Physics: Current, Voltage, Circuits, Heat Capacity, Latent Heat
Laws of thermal dynamics.

Unit 3 - 1 optional topic from: Astrophysics
Solid materials
Nuclear and particle physics
Medical physics.

A2 LEVEL:

Unit 4 - Waves and our Universe: Circular motion
Simple harmonic motion and the expanding universe.

Unit 5 - Fields and Forces: Gravitational
Electrical and magnetic fields
Electromagnetic induction.

Unit 6 - Synthesis synoptic unit.

Assessment (EDEXEL)

Unit 1 Exam 30% of AS 15% of A2

Unit 2 Exam 30% of AS 15% of A2

Unit 3 Practical test 20% of AS 10% of A2 + Exam 20% of AS 10% of A2

Unit 4 Exam 15% of A2

Unit 5 Practical test 7.5% of A2 Exam 7.5% of A2

Unit 6 Exam 20% of A2

AS/A2 Psychology

Psychology is a subject which will interest students who want to know more about the workings of the mind and human behaviour. The OCR syllabus emphasises the application to everyday life of psychological concepts, theories and research. Psychology encourages the development of literacy, communication, ICT and Numeracy skills.

Entry Requirement

5 GCSE's at Grades A-C
English GCSE (or other essay based subject) - Grade C or above
Science GCSE - Grade C
Mathematics GCSE - Grade C

Course Content

AS LEVEL:

- Study of 20 pieces of Psychological research:
 - Social Psychology
 - Biopsychology
 - Developmental Psychology
 - Individual differences and Cognitive Psychology.
- Psychological Investigations

A2 LEVEL:

- Study of Applied Psychology (possibly Health and Organisational Psychology) and carry out own research. You will be encouraged to apply Psychology to everyday life experiences.

Assessment (OCR)

AS LEVEL Exam (short answers and structured question) 1 hour
Exam (short answers + themes and structured question) 1 hour
Exam - practical work 1 hour
Students also submit a practical folder

A2 LEVEL Coursework: Research report and assignment
2 Exams (one for each specialist choice) 1 hour 30 min each

AS/A2 Religious Education

Entry Requirement

We want people with open, enquiring minds and an interest in finding out about the world. Candidates need not have studied RE at GCSE, but must have gained A to C in English or another Humanities subject to be accepted on the course.

Course Content

Religious Studies is a valuable qualification both at AS and A2. It shows employers and universities that you are inquisitive about human nature and the big questions in life. RS also develops the essential skills of reading, evaluation, essay writing, presenting material and it demands that you can apply yourself with diligence to any task.

Religious Studies is about:

Beliefs	Ideas	Philosophies
Culture	Thinking	Yoga
Meditation	Expanding your mind	Gaining Confidence
Written Skills	Communication	Empathy
Faith		

Assessment (OCR)

Exam papers will be in the form of candidates answering 2 essay questions from a choice of 4 for each unit studied. One unit at A2 Level can be assessed through an extended essay in place of an exam in that unit.